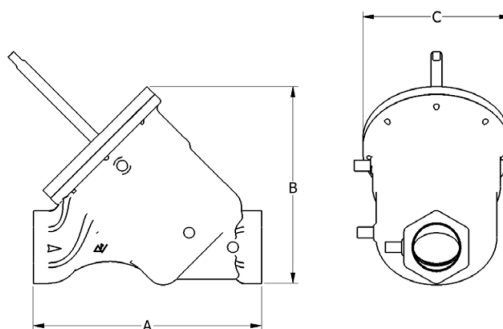
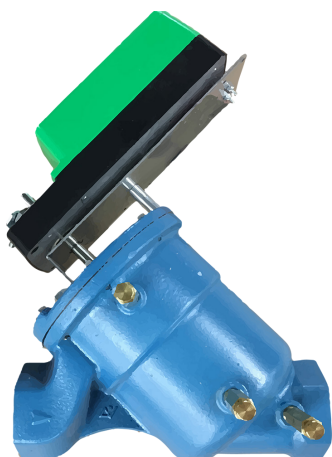


## 50mm (2") HDP

### VALVE SPECIFICATIONS

<b>Characteristics</b>	Pressure Independent
<b>Service</b>	Heating Water or Chilled Water, Glycol
<b>Maximum Design Flow at 5 PSID [0.34bar] Minimum</b>	90 GPM [5.6 LPS] / 340.7 LPM
<b>Maximum Design Flow at 10 PSID [0.69bar] Minimum</b>	112 GPM [7.1 LPS] / 424.0 LPM
<b>Maximum Flow Variation</b>	+/- 5%
<b>Differential Pressure Range</b>	5 - 70 PSID [0.34 - 4.83 bar] / 10 - 90 PSID [0.69 - 6.20 bar]
<b>Body Pressure Rating</b>	300 PSIG [20.7]
<b>Close Off Pressure</b>	200 PSID [13.8]
<b>Pipe Connections</b>	Female NPT
<b>Materials</b>	
<b>Body</b>	ASTM A536 Ductile Iron
<b>Internals</b>	ASTM B16 Brass / AISI 304 SS
<b>Seals</b>	EPDM/ PTFE
<b>Shutoff</b>	ANSI B16-104
<b>Leakage</b>	ANSI / FCI 70-2-2-2006, Class III
<b>Rangeability</b>	100 : 1
<b>Maximum Temperature</b>	250°F [121°C]
<b>P/T Ports</b>	3
<b>Weight (Without Actuator)</b>	34 lbs [15.4 kg]
<b>Actuation</b>	90° Electric, Pneumatic, Manual

### Guaranteed $\Delta T$



### Dimensions in inches [mm]

Valve Size	A	B	C
2" HDP [50mm]	10.5 [267]	9.4 [239]	6.8 [173]
For information only and not for fabrication			